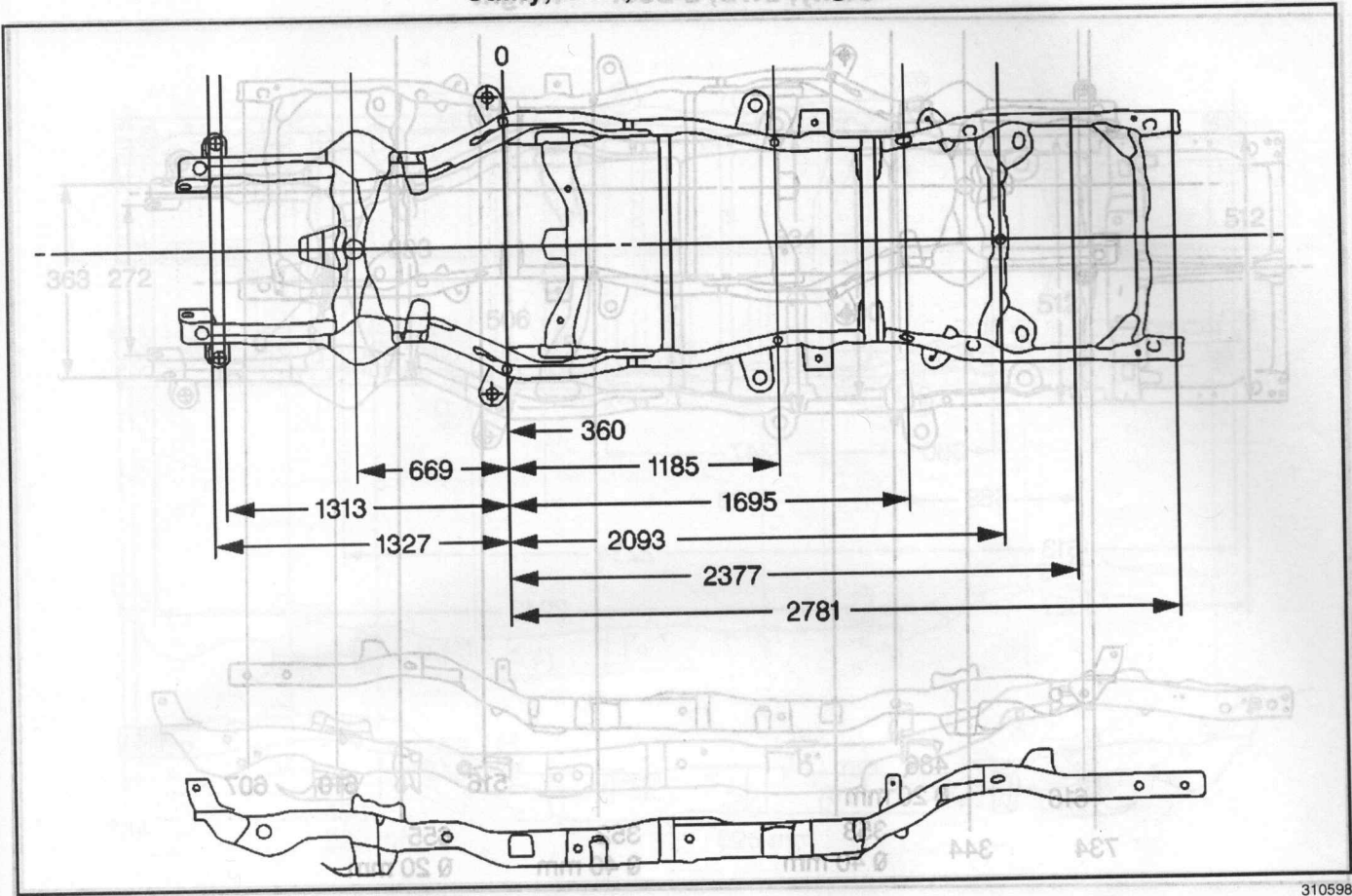




Utility, 2WD, 2-Door — Length

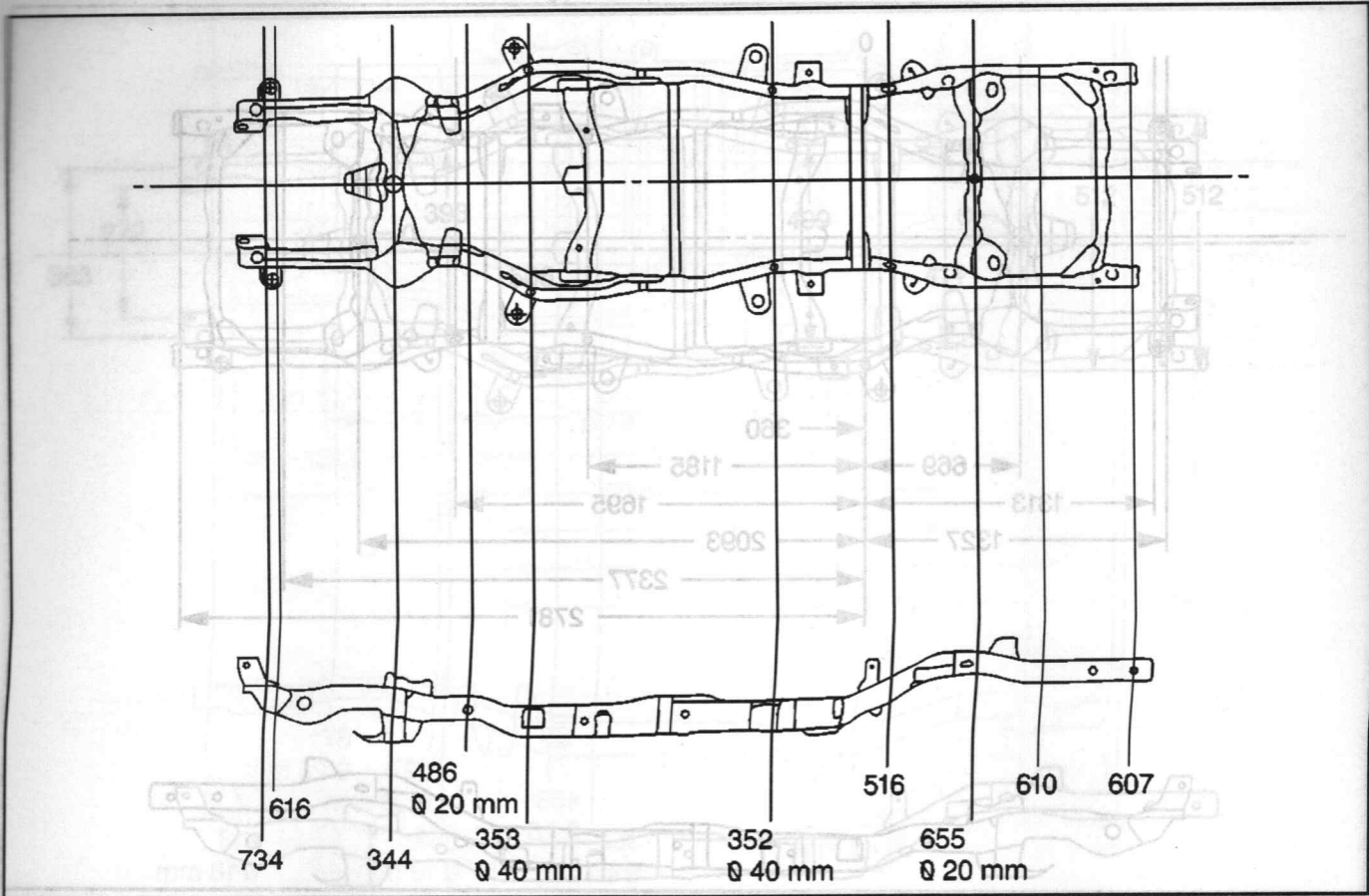


310598

00201E

595

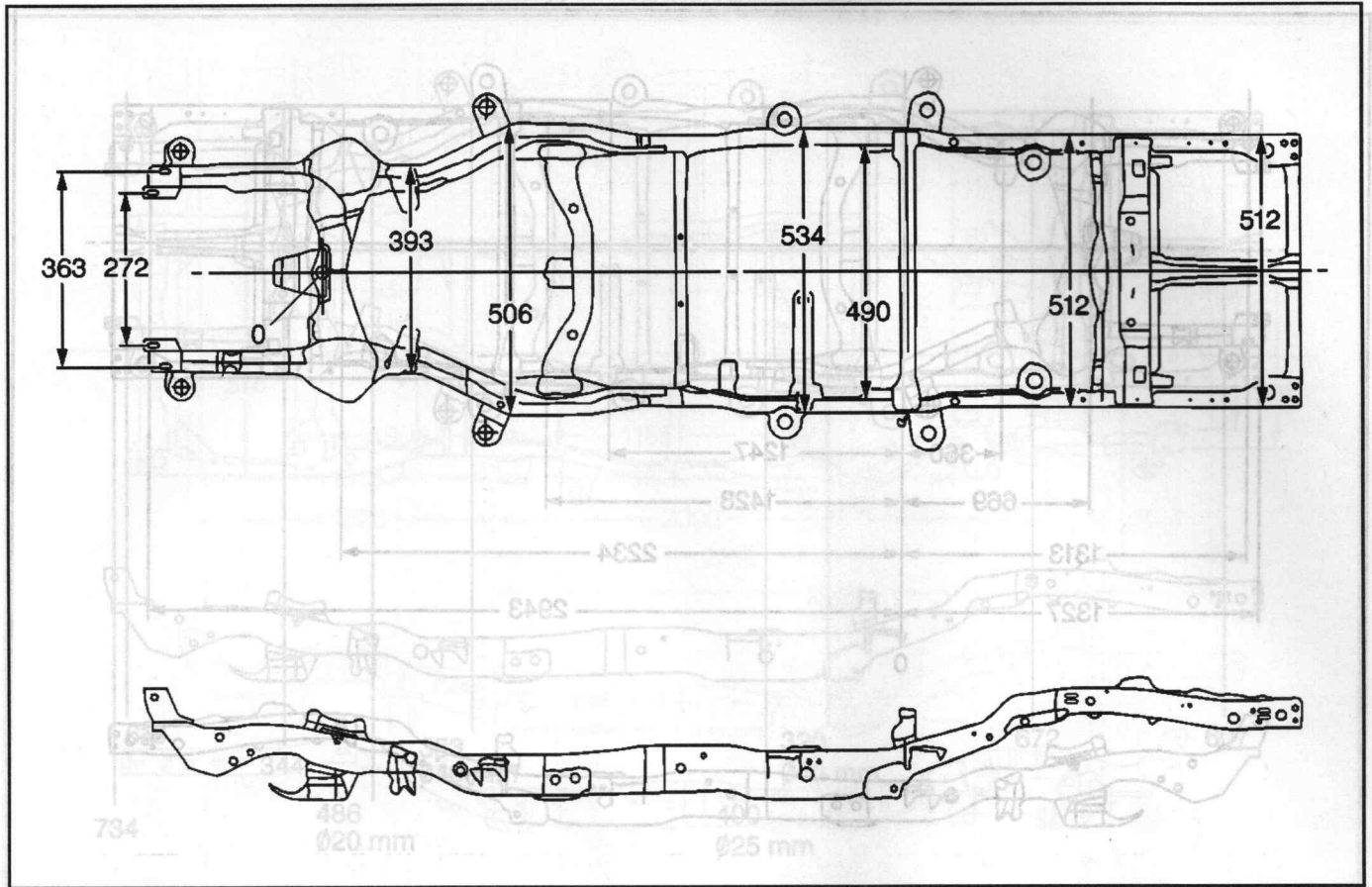
Utility, 2WD, 2-Door — Height



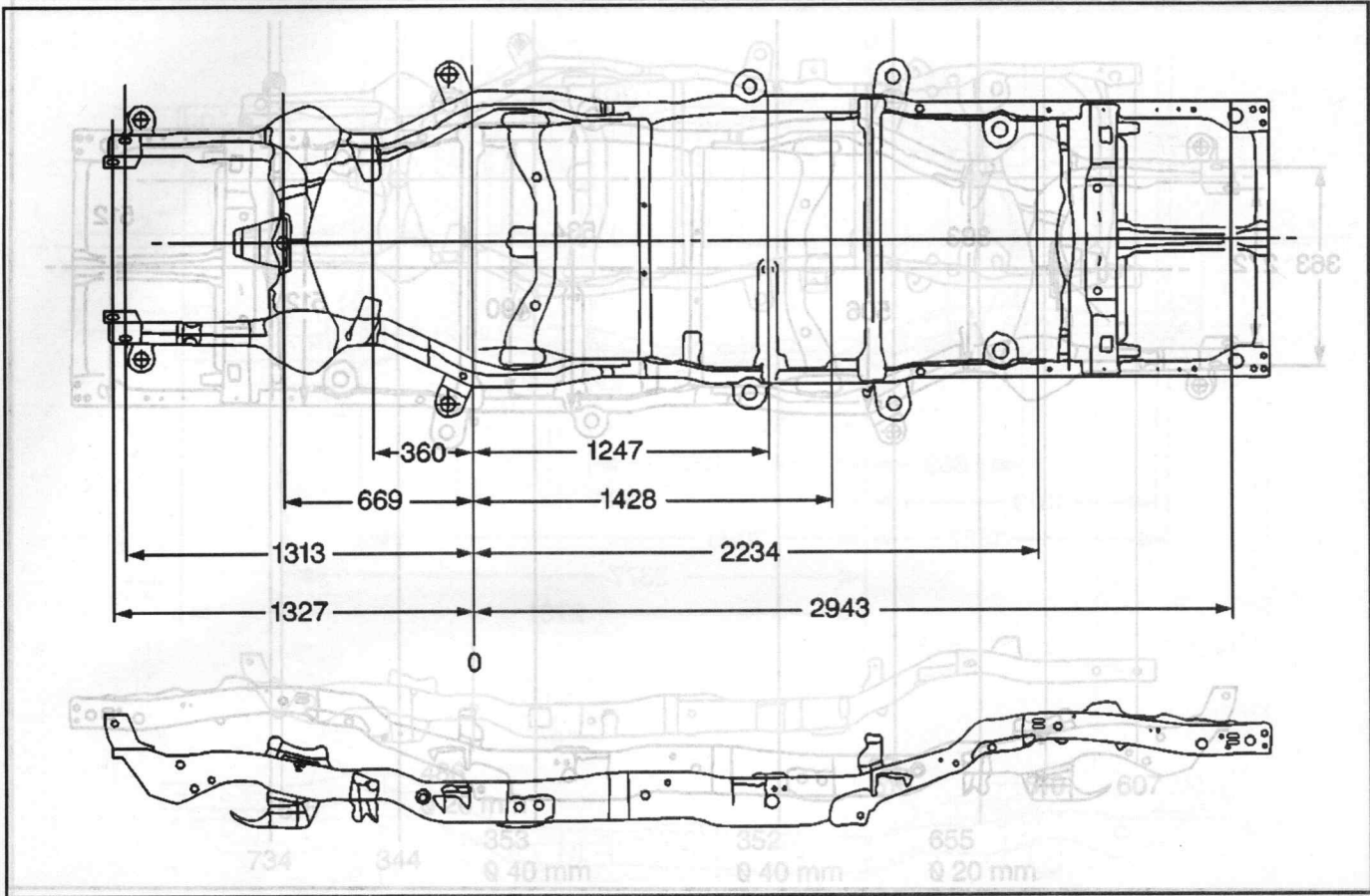
310599



Utility, 2WD, 4-Door — Width



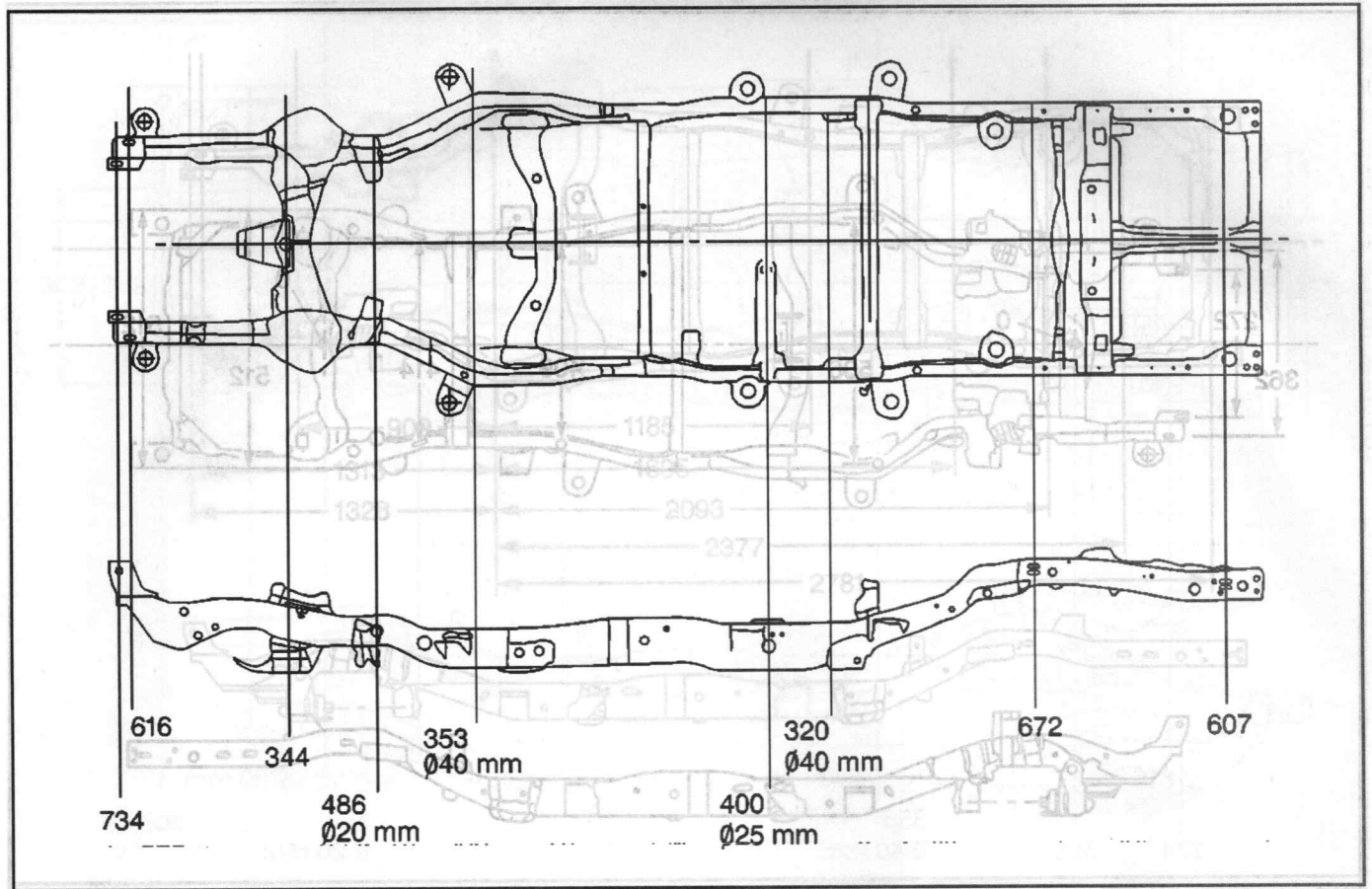
Utility, 2WD, 4-Door — Length



50807E

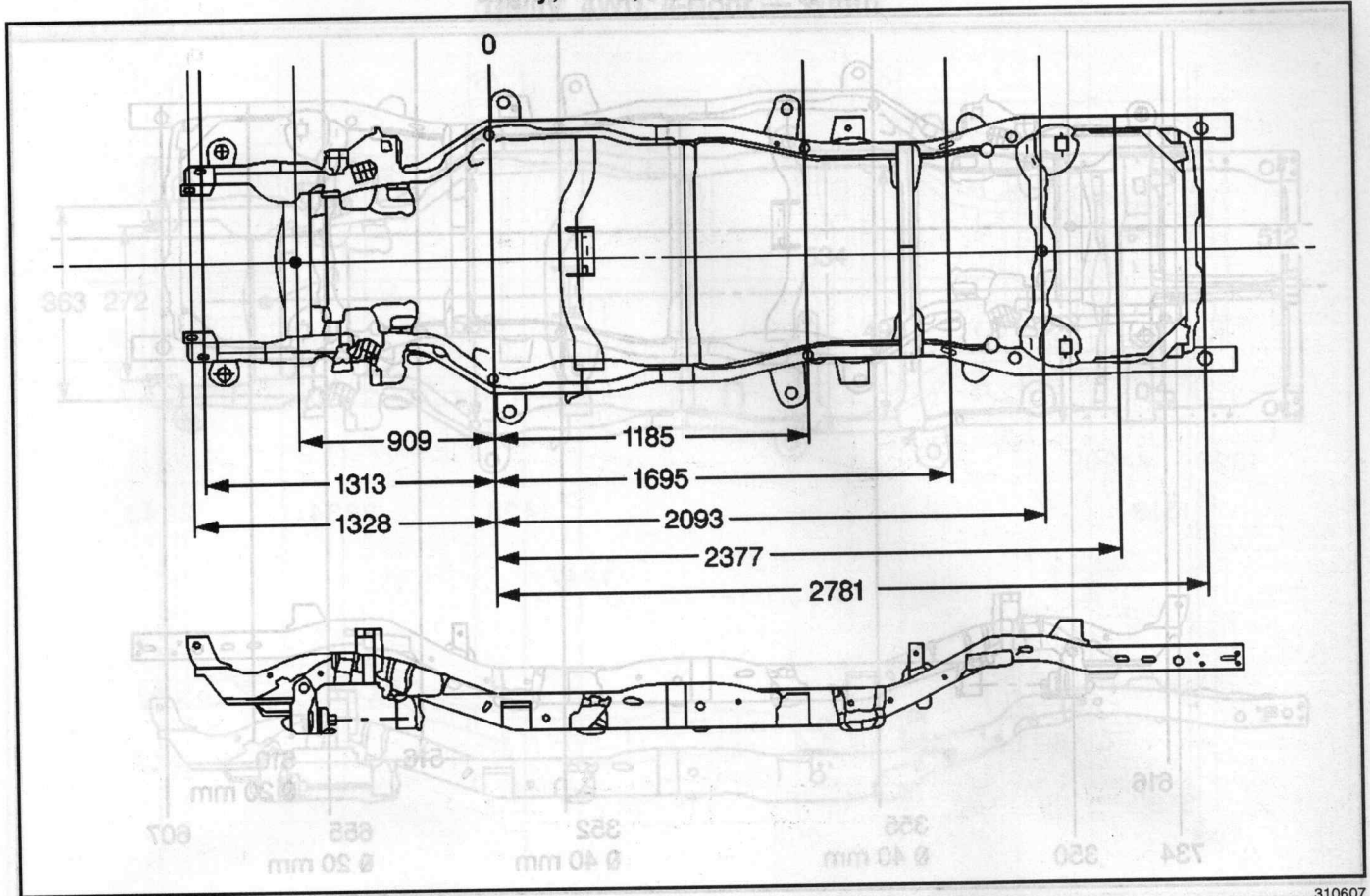
310603

Utility, 2WD, 4-Door — Height

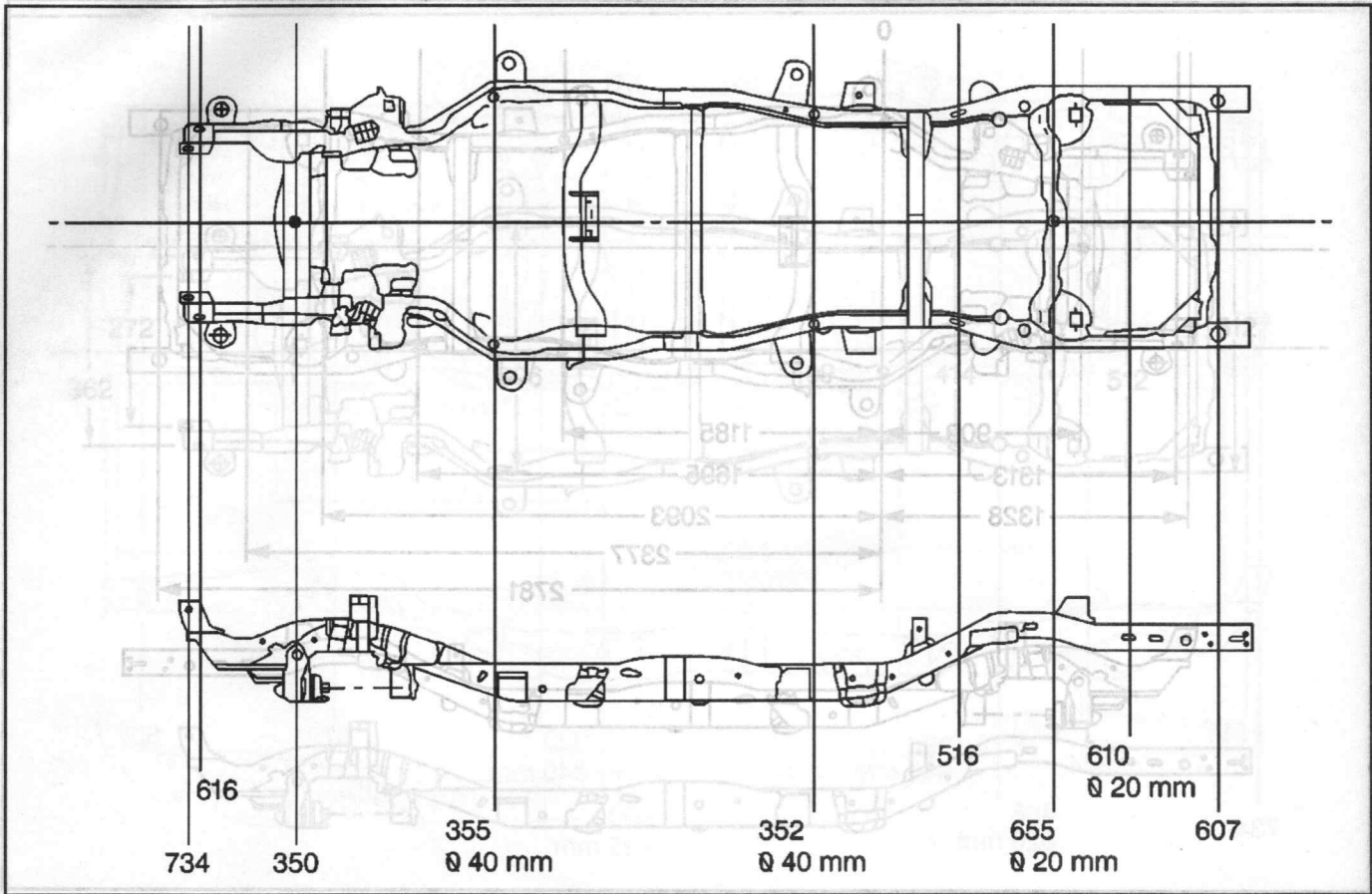




Utility, 4WD, 2-Door — Length



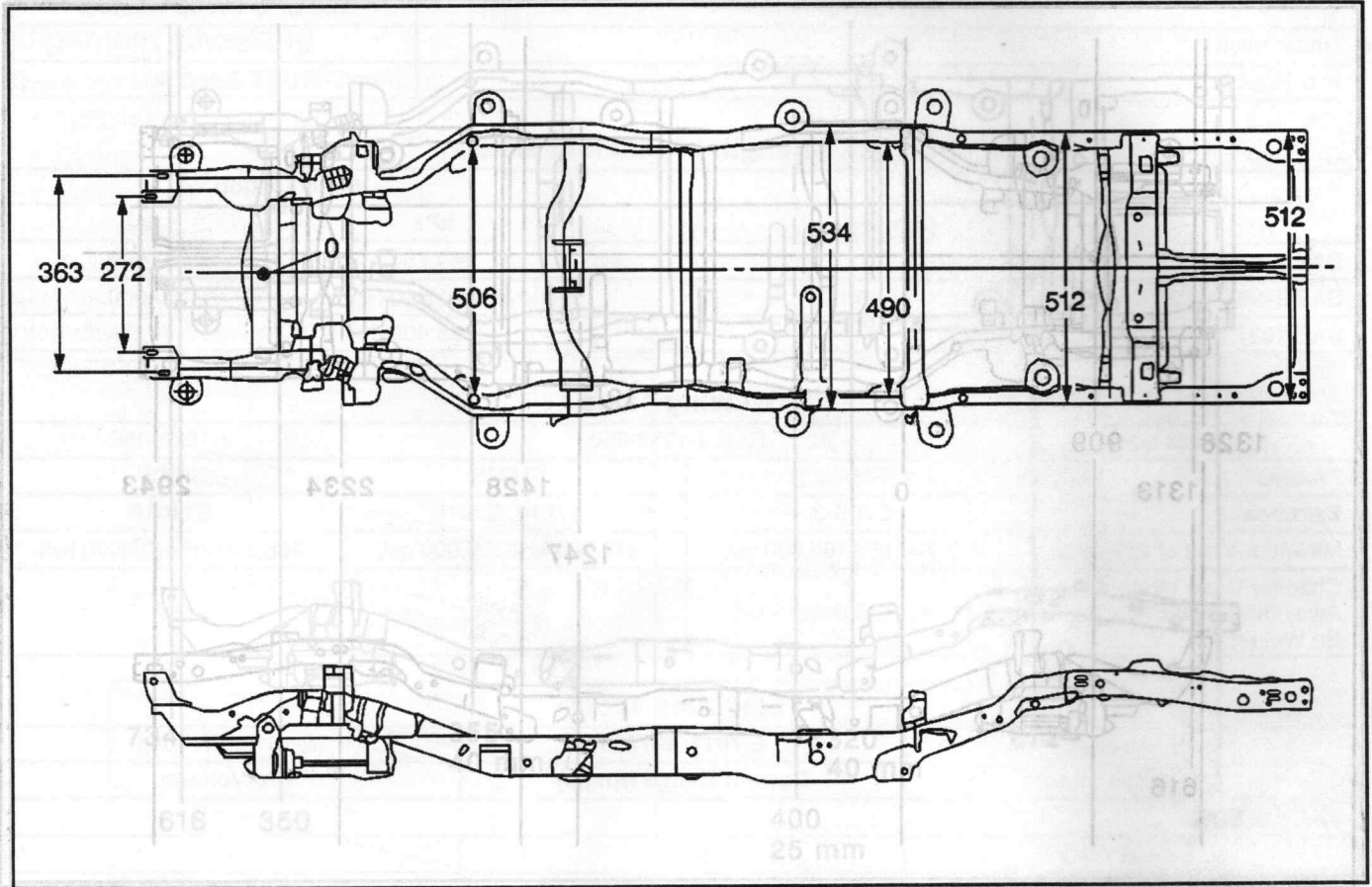
Utility, 4WD, 2-Door — Height



100015

310608

Utility, 4WD, 4-Door — Width



018012

310609

Reference Points - Symmetrical

Symmetrical reference points are two corresponding points on opposite sides of the centerline that have equal specifications in length and height. Symmetrical reference points are used in order to make quick inspections in order to determine underbody structural damage. All measurements provided in the dimension charts are symmetrical unless otherwise noted.

Reference Points - Asymmetrical

When two corresponding reference points have different measurements, the measurements are asymmetrical. If you perform a quick cross check and the measurements are unequal, use the dimension charts in order to verify if the measuring points are symmetrical or asymmetrical.

Utility, 4WD, 4-Door — Length

